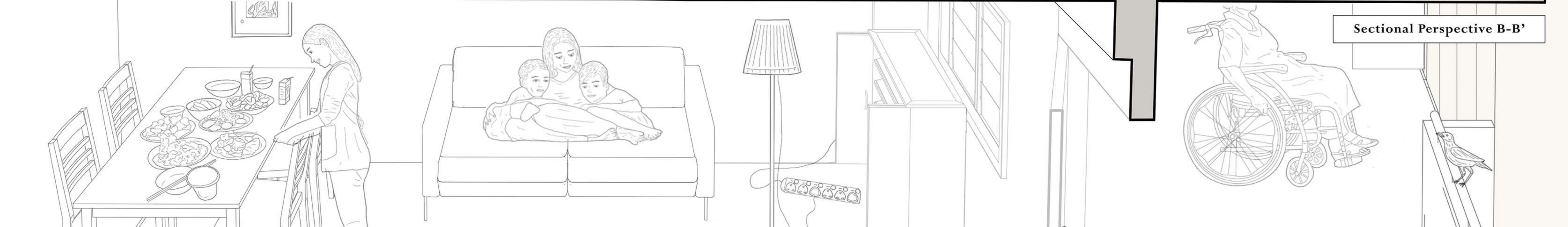
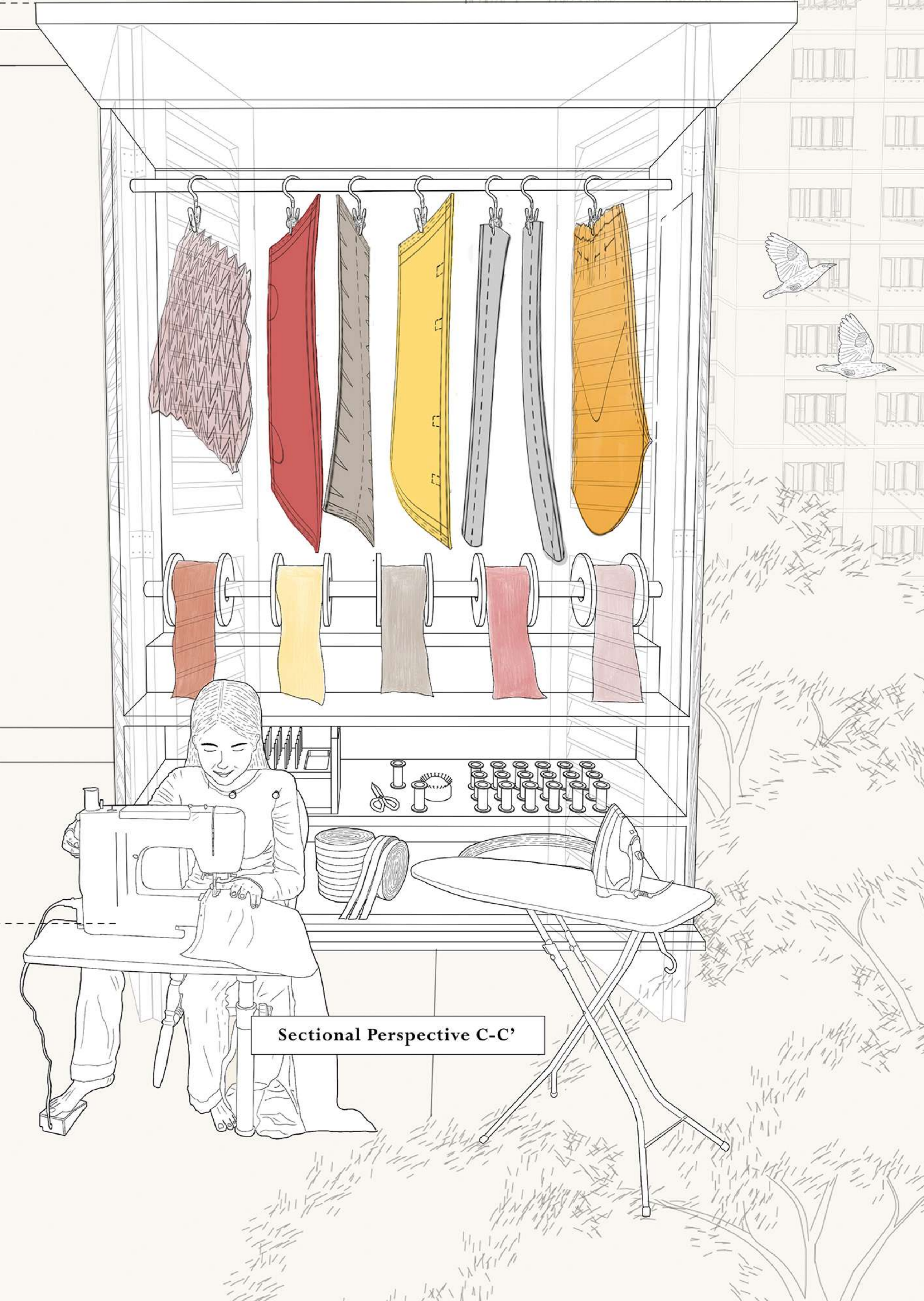
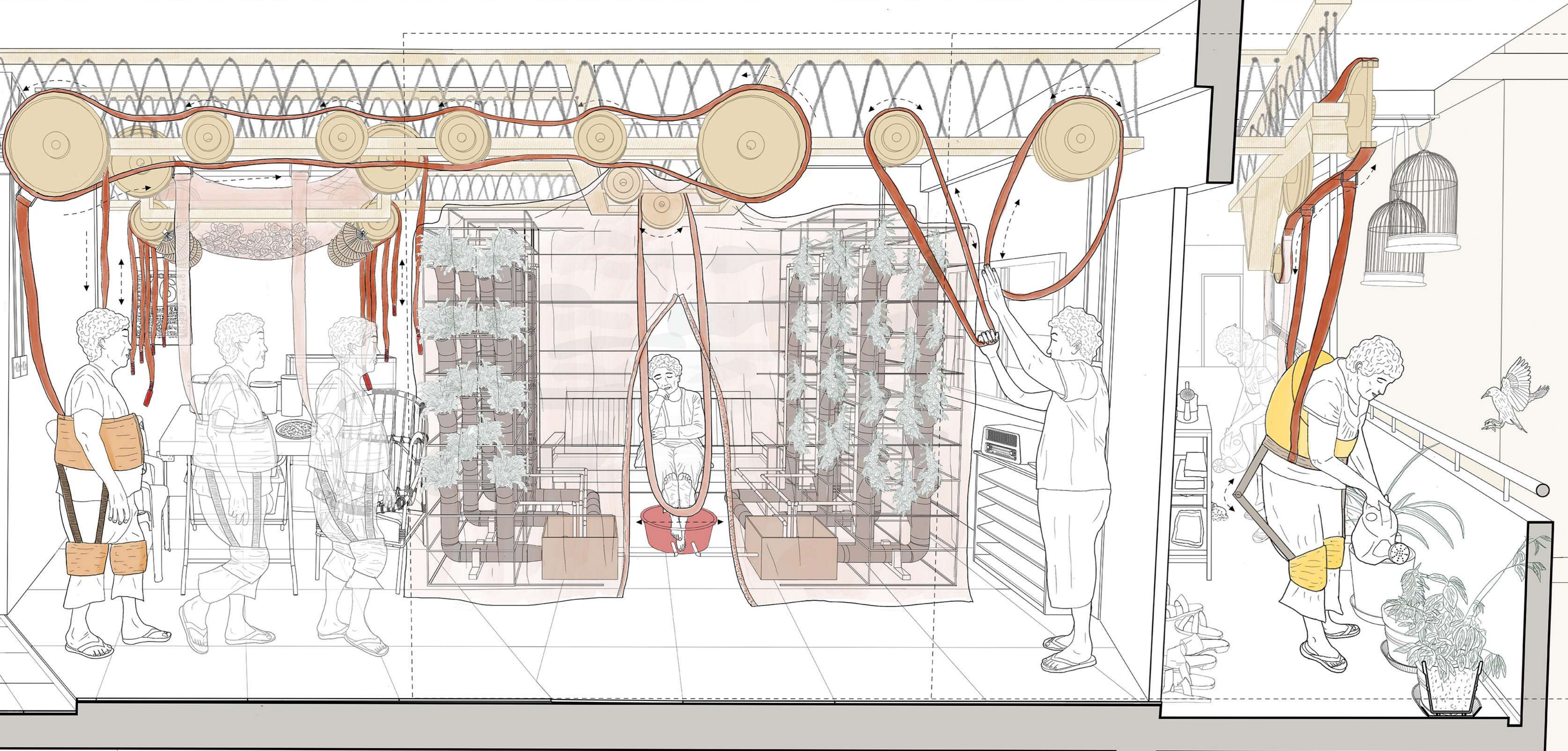
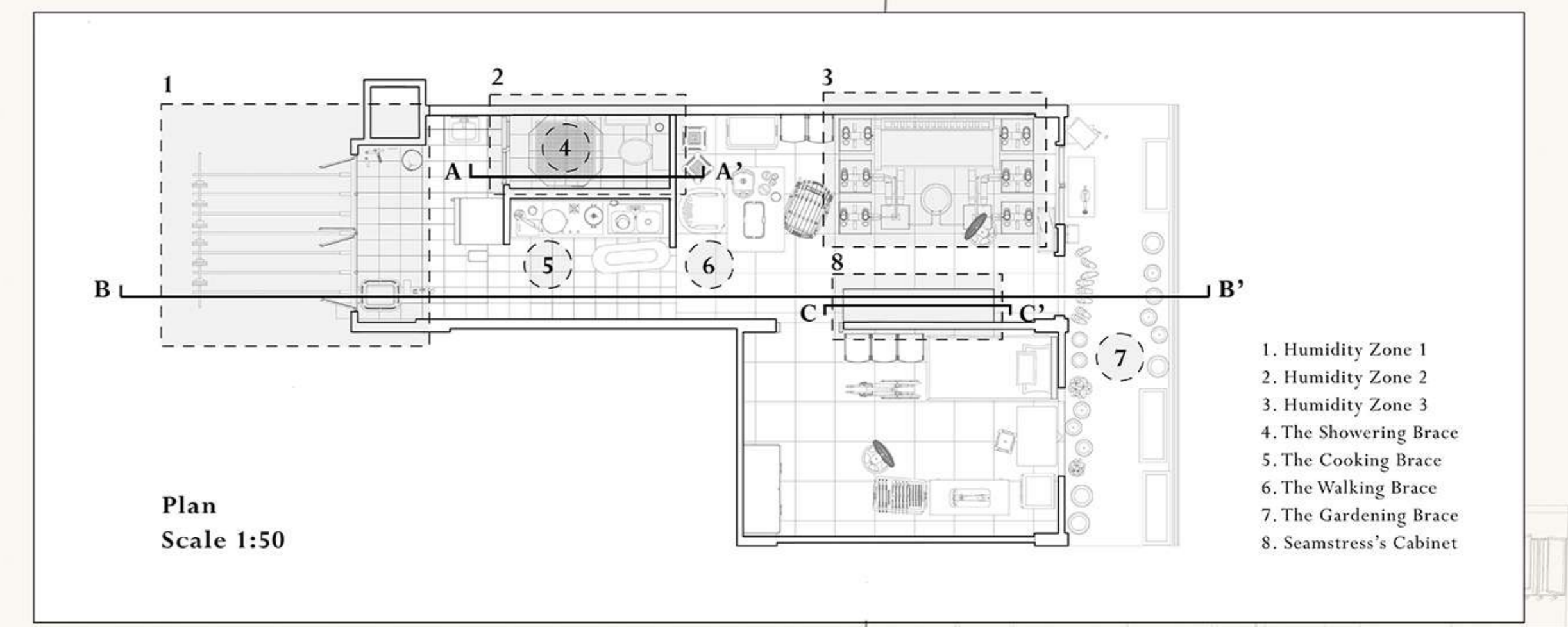


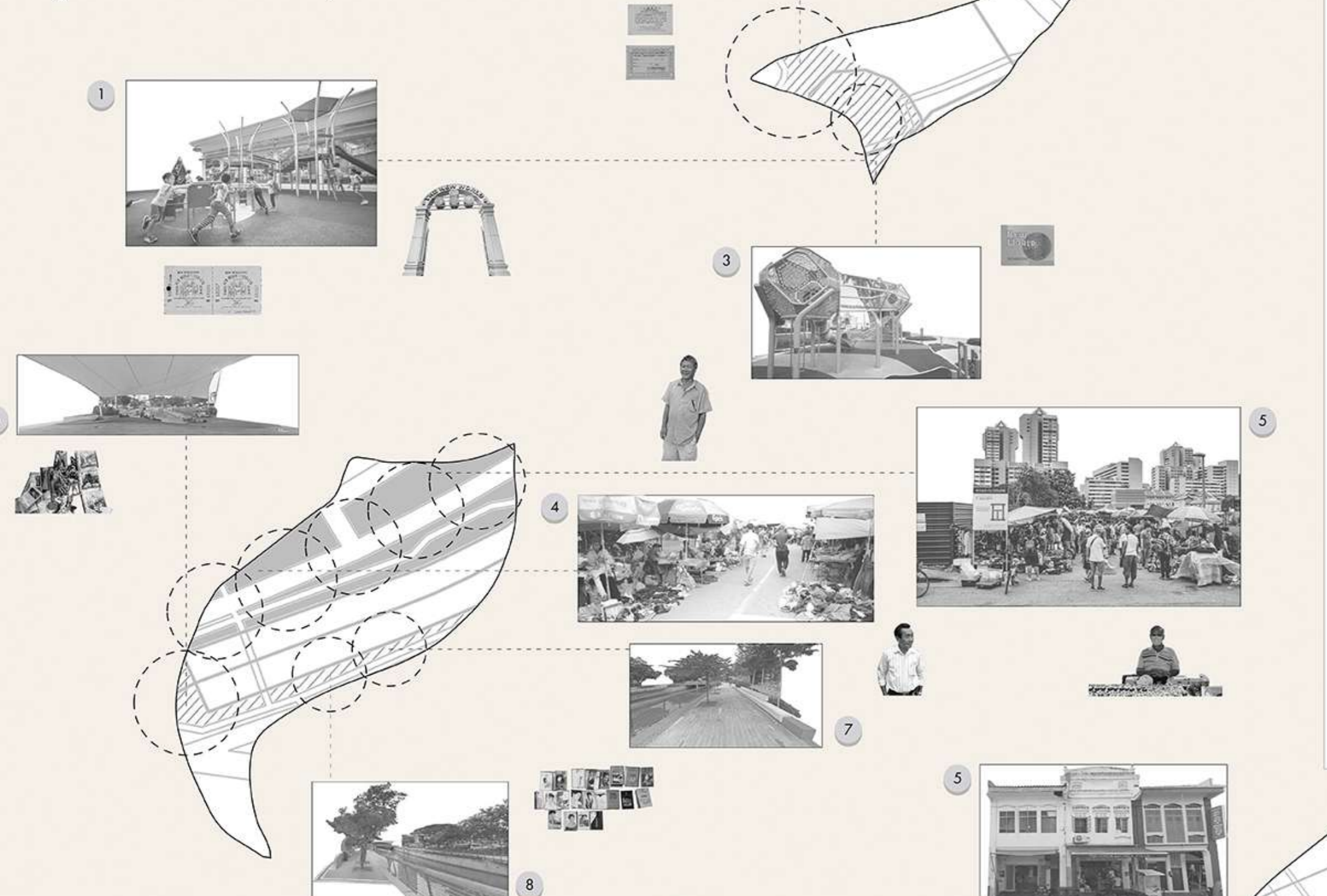
Sectional Perspective A-A'



An Ecology of Crafts/Tradesmen

Jalan Besar

Fragment 2
Sungei Road Thieves' Market, Rochor Canal



- Legend:**
- 1) Playground (Outside City Square Mall)
 - 2) Green Planters with Seating (Outside City Square Mall)
 - 3) Playground (Outside City Square Mall)
 - 4) Sungei Road Thieves Market
 - 5) Sungei Road Thieves Market (Entrance)
 - 6) Tensile Structure (Along Rochor Canal)
 - 7) Benches (Along Rochor Canal)
 - 8) Seating Structure (Along Rochor Canal)

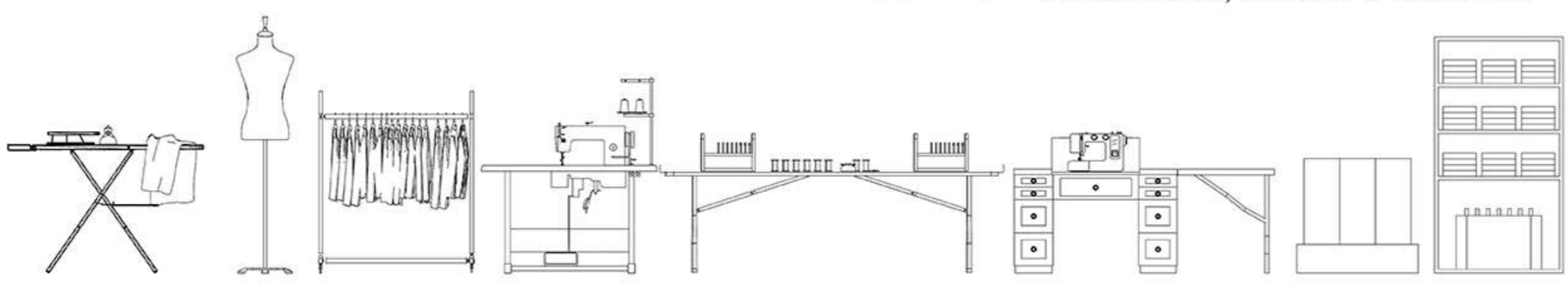


- Legend:**
- 1) Ong Tiong Kang Hardware Pte. Ltd.
 - 2) Hup Yick Engineering Pte. Ltd.
 - 3) Chye Seng Huat Hardware
 - 4) Hup Seng Huat, Chop Huat Kee
 - 5) Koh Khoon Electrical Pte. Ltd.
 - 6) Lucid
 - 7) For The People
 - 8) Wayman Enterprise
 - 9) Wah Joo Seng International Trading Pte. Ltd. / Red Eye Smokehouse
 - 10) Jalan Besar Stadium

The Seamstress



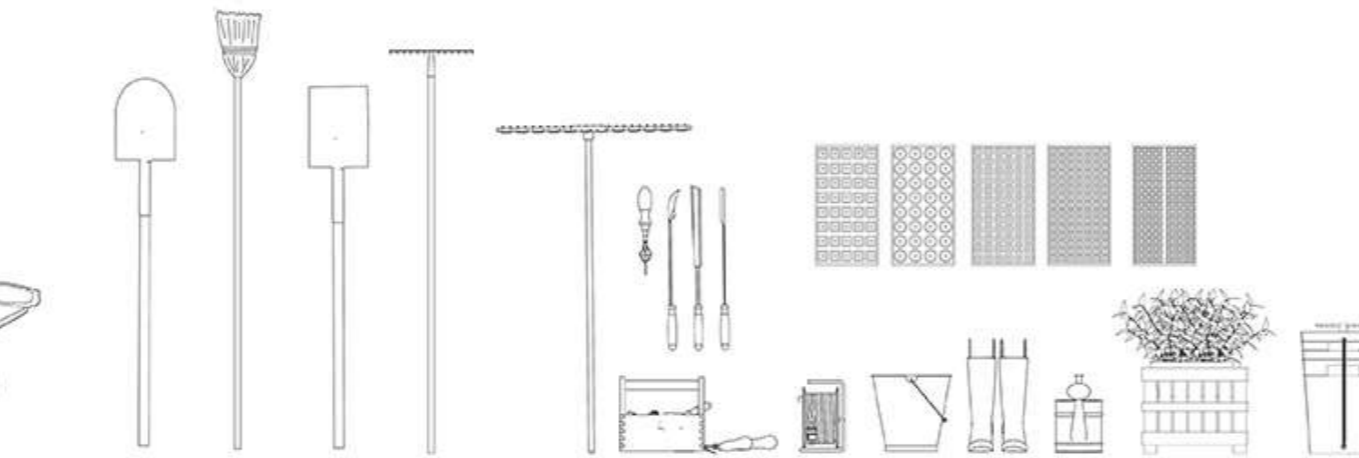
Seamstress's Assets:



The Gardener



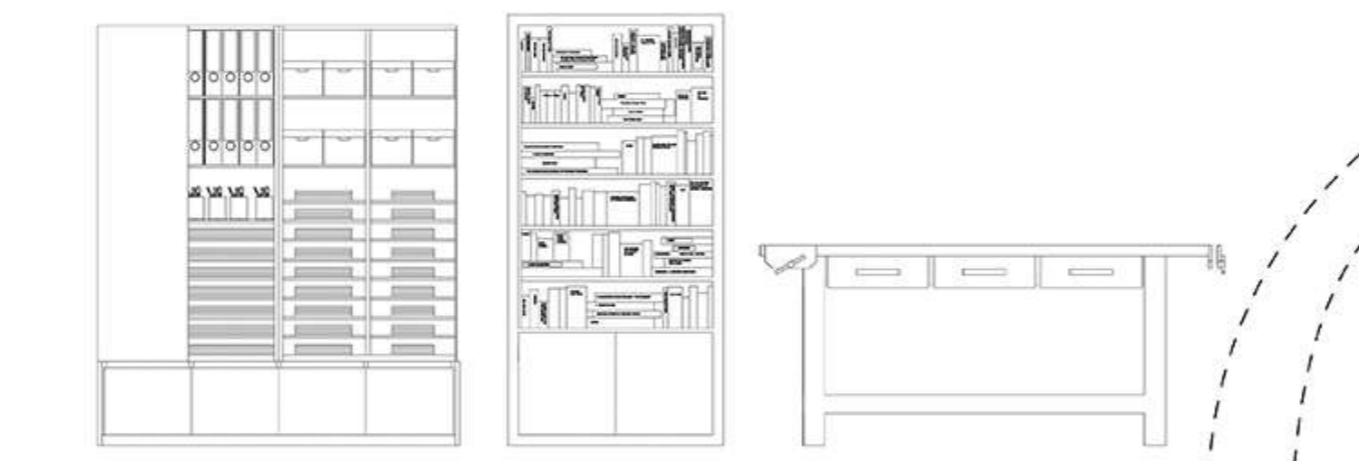
Gardener's Assets:



The Bookbinder

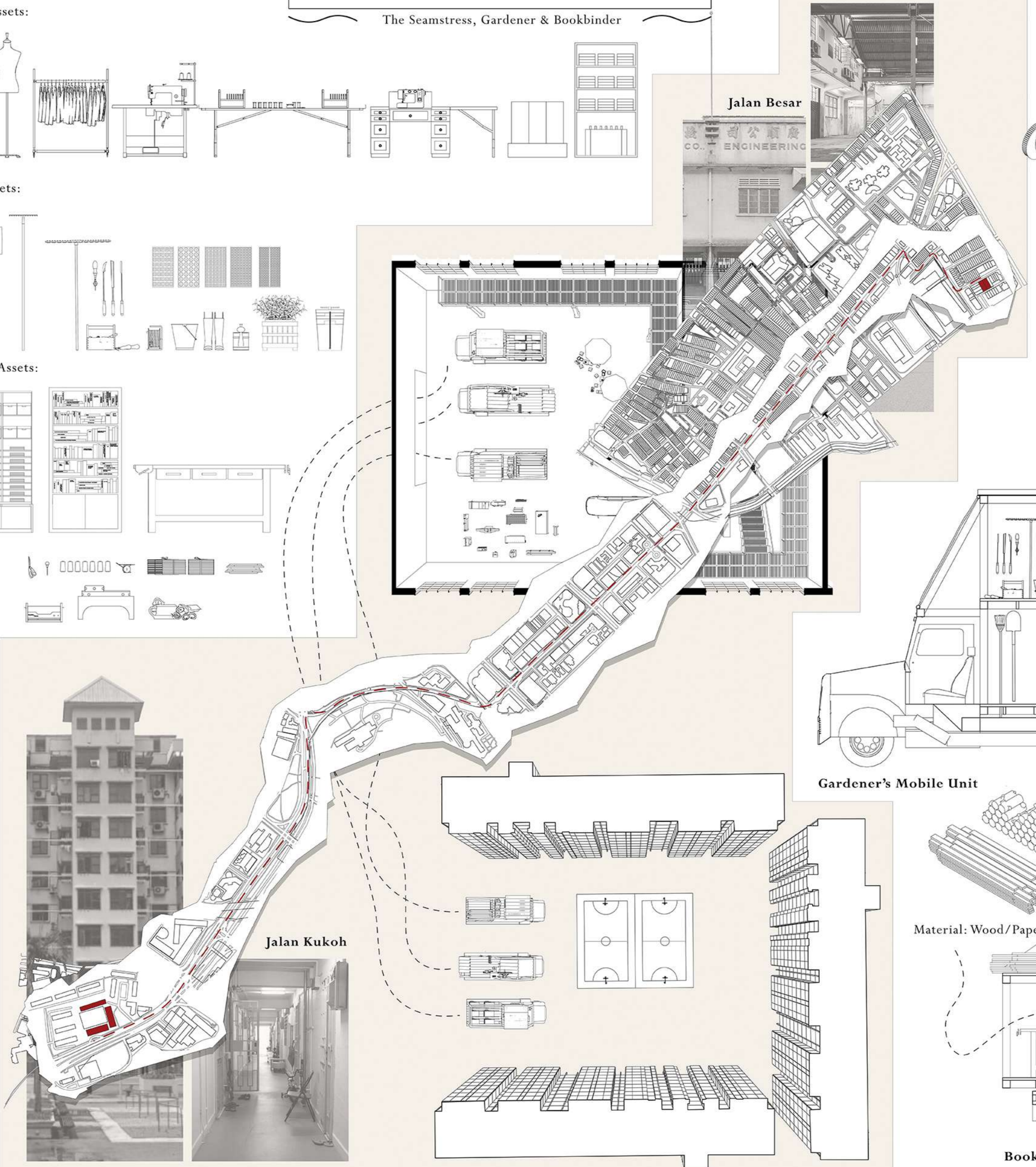


Book Binder's Assets:



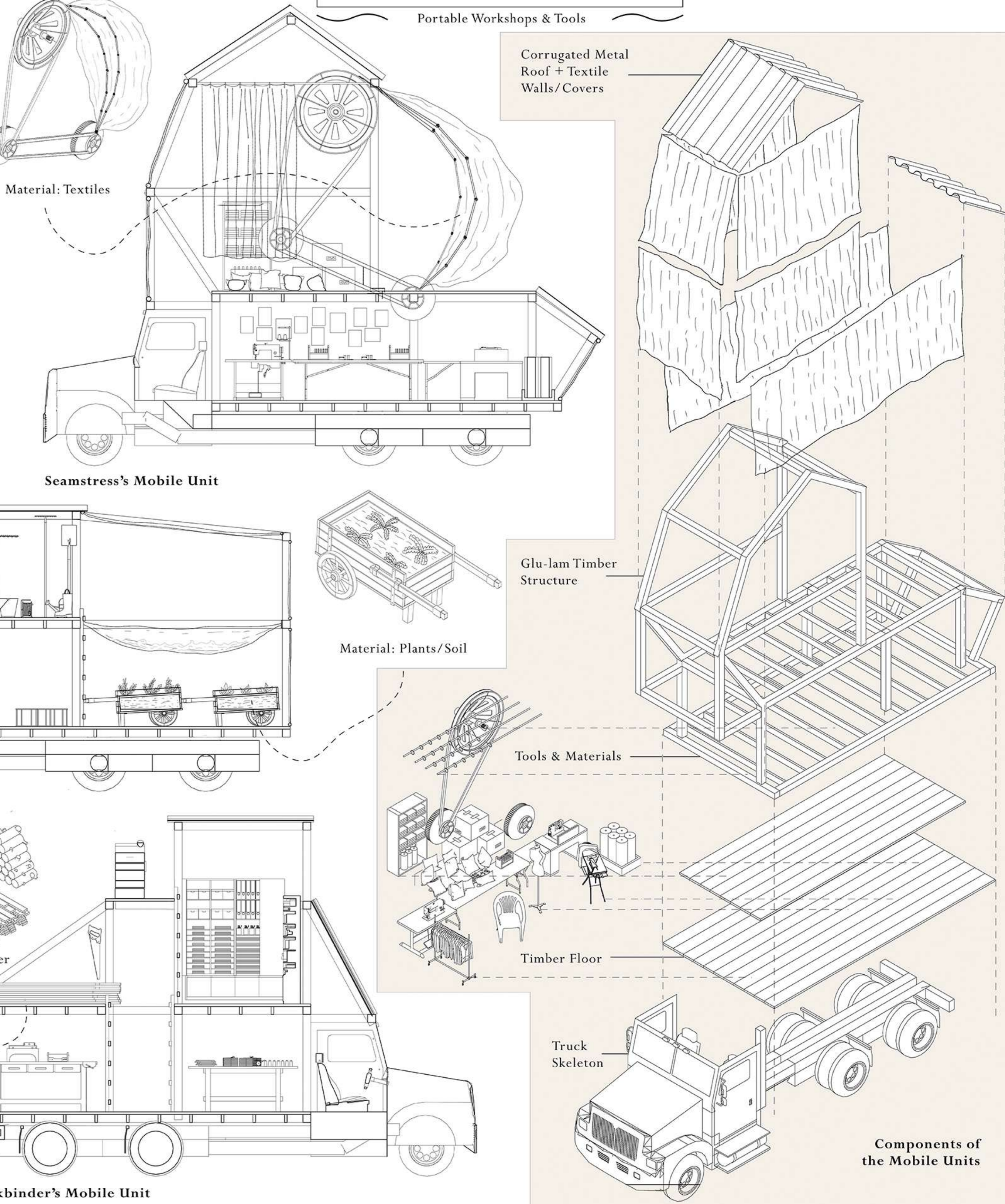
Route of the Itinerant 'Architects'

The Seamstress, Gardener & Bookbinder



Construction of Mobile Units

Portable Workshops & Tools



Material: Textiles

Seamstress's Mobile Unit

Gardener's Mobile Unit

Material: Wood/Paper

Bookbinder's Mobile Unit

Corrugated Metal Roof + Textile Walls/Covers

Glu-lam Timber Structure

Material: Plants/Soil

Tools & Materials

Timber Floor

Truck Skeleton

Components of the Mobile Units

Repair of Society

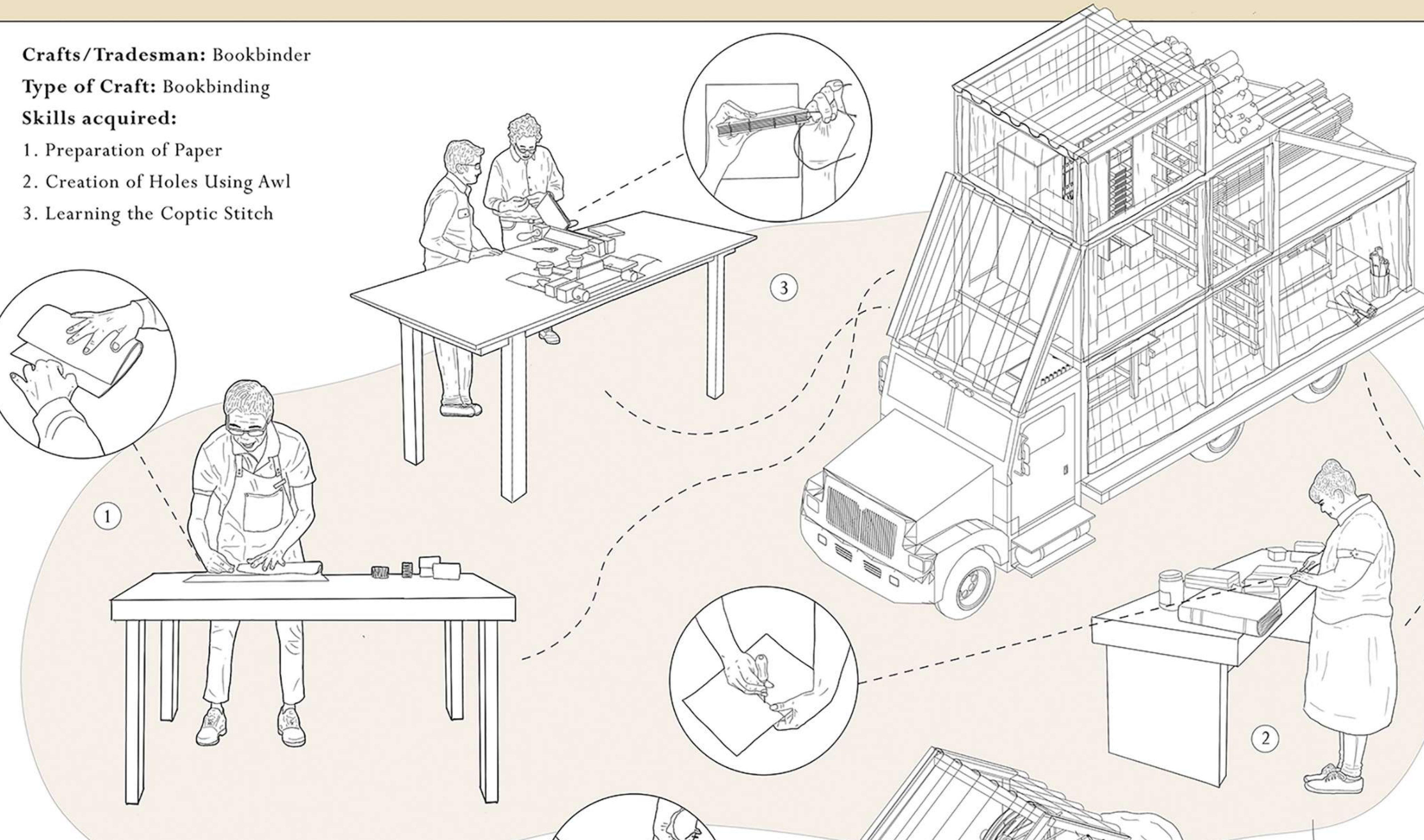
Jalan Kukoh

Crafts/Tradesman: Bookbinder

Type of Craft: Bookbinding

Skills acquired:

1. Preparation of Paper
2. Creation of Holes Using Awl
3. Learning the Coptic Stitch

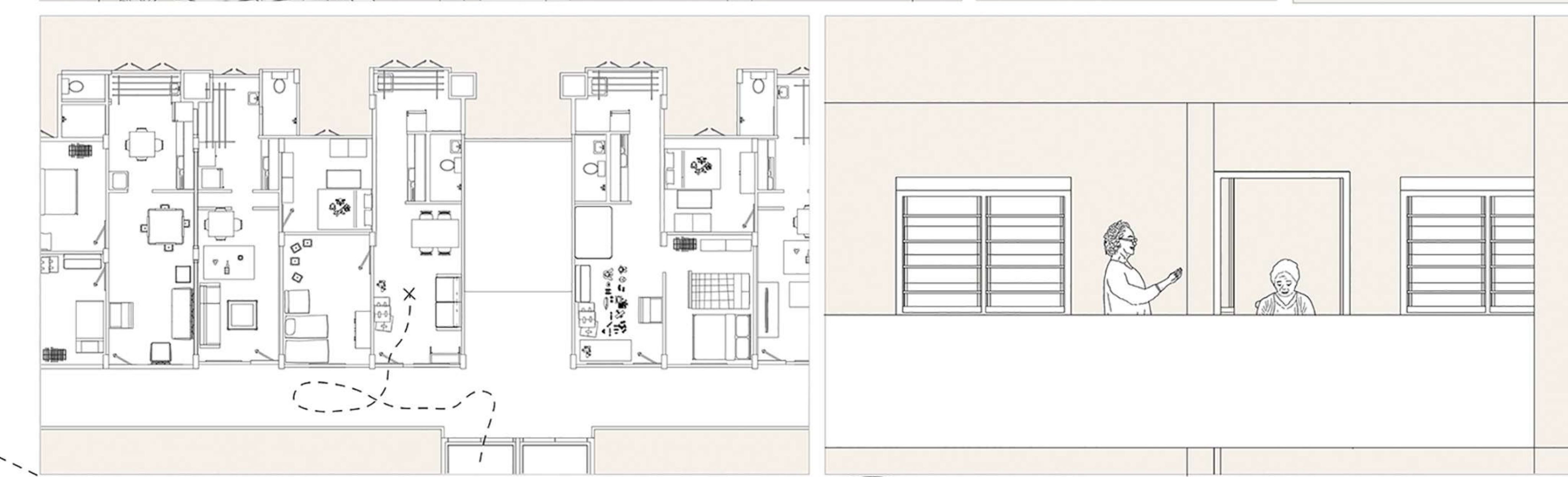
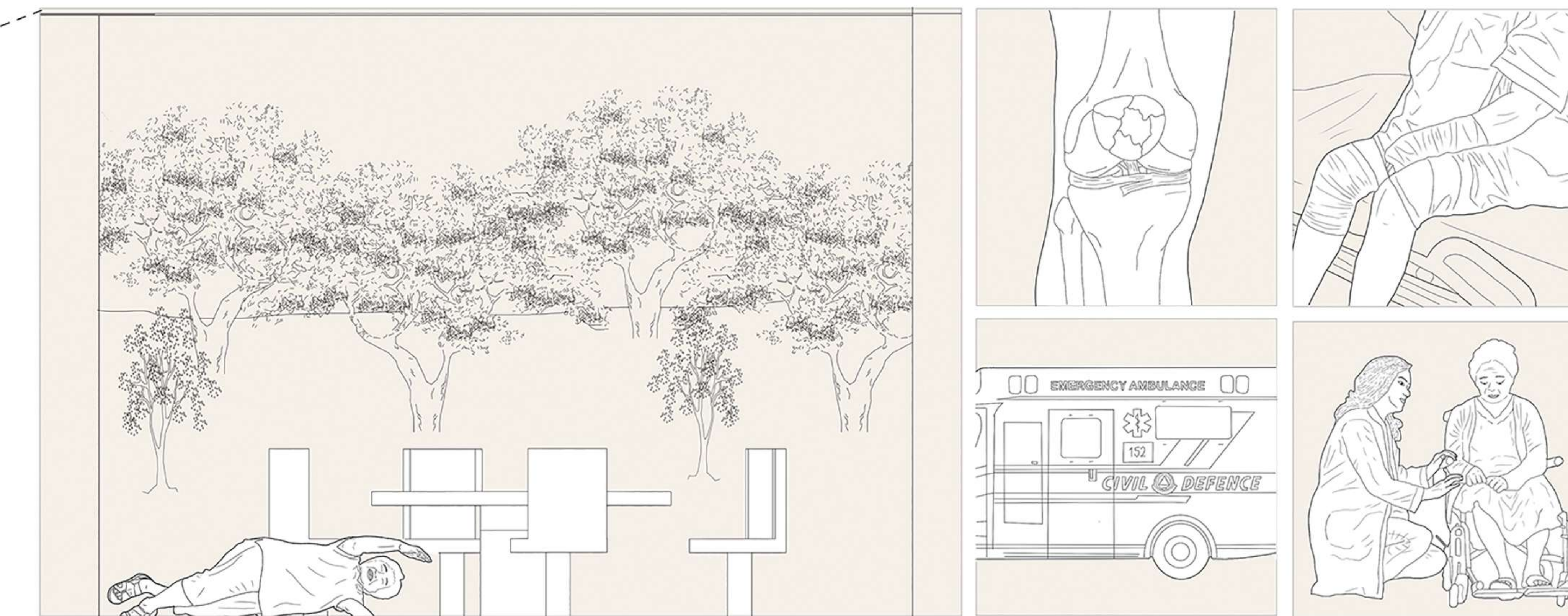
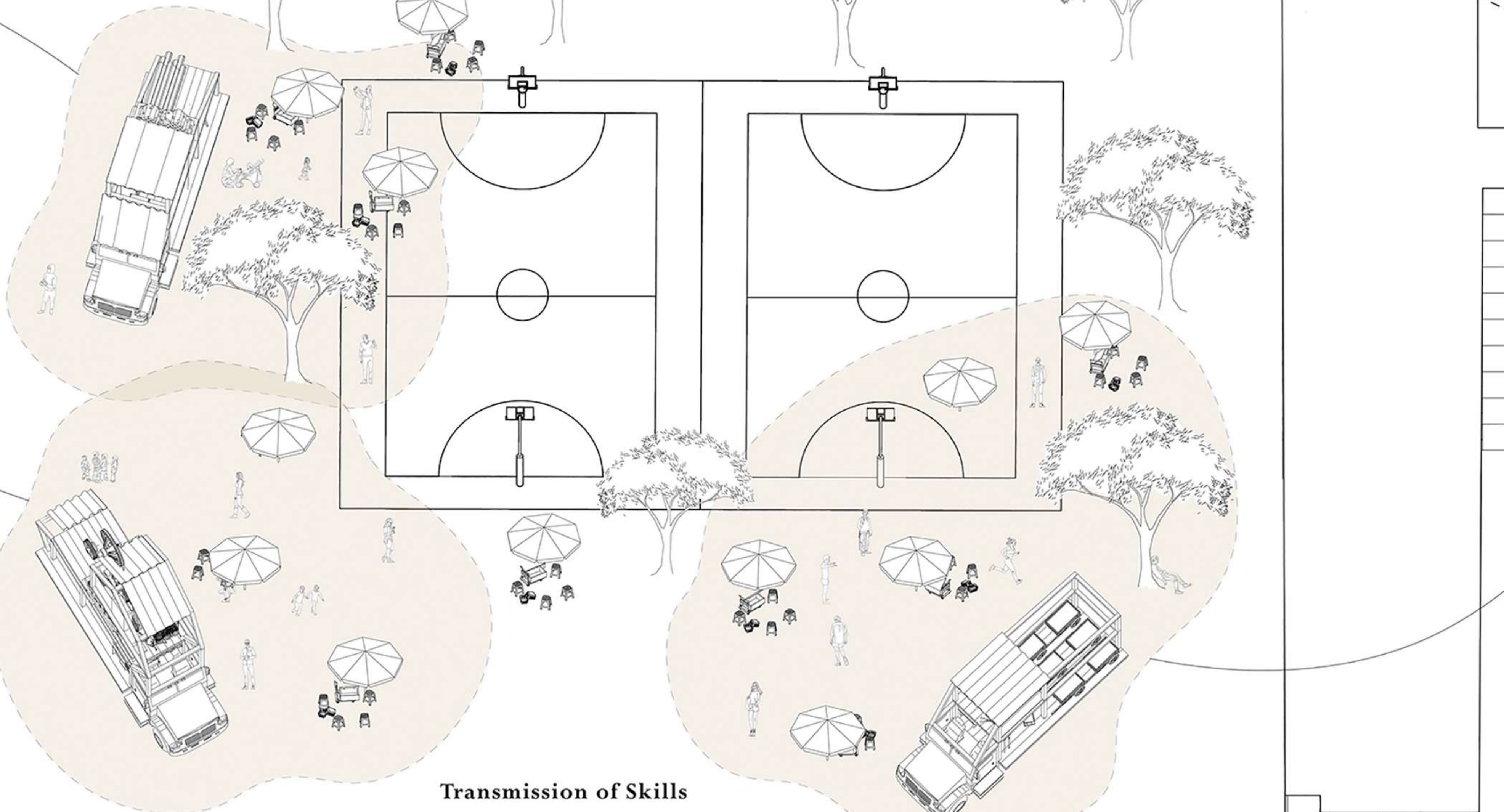
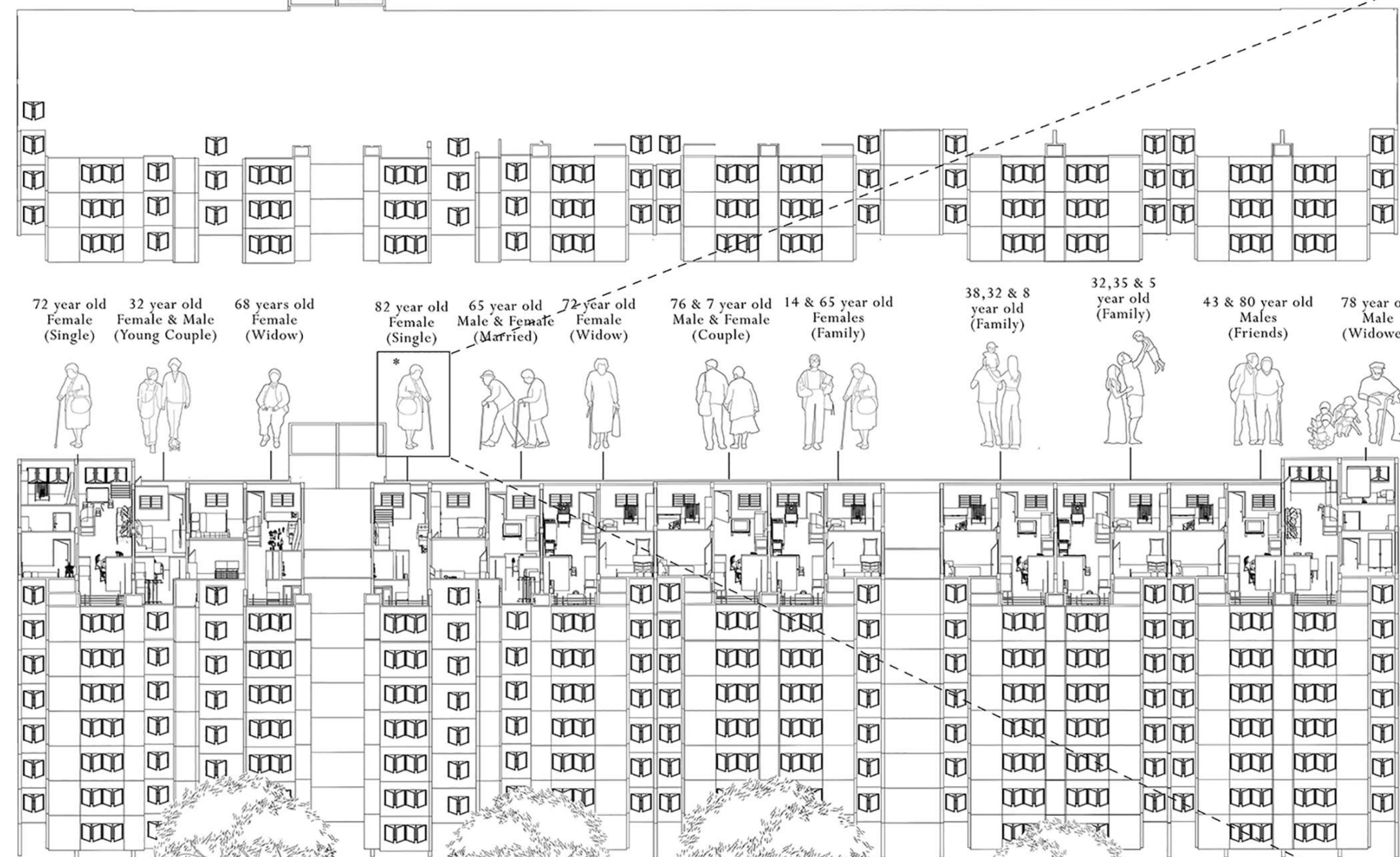
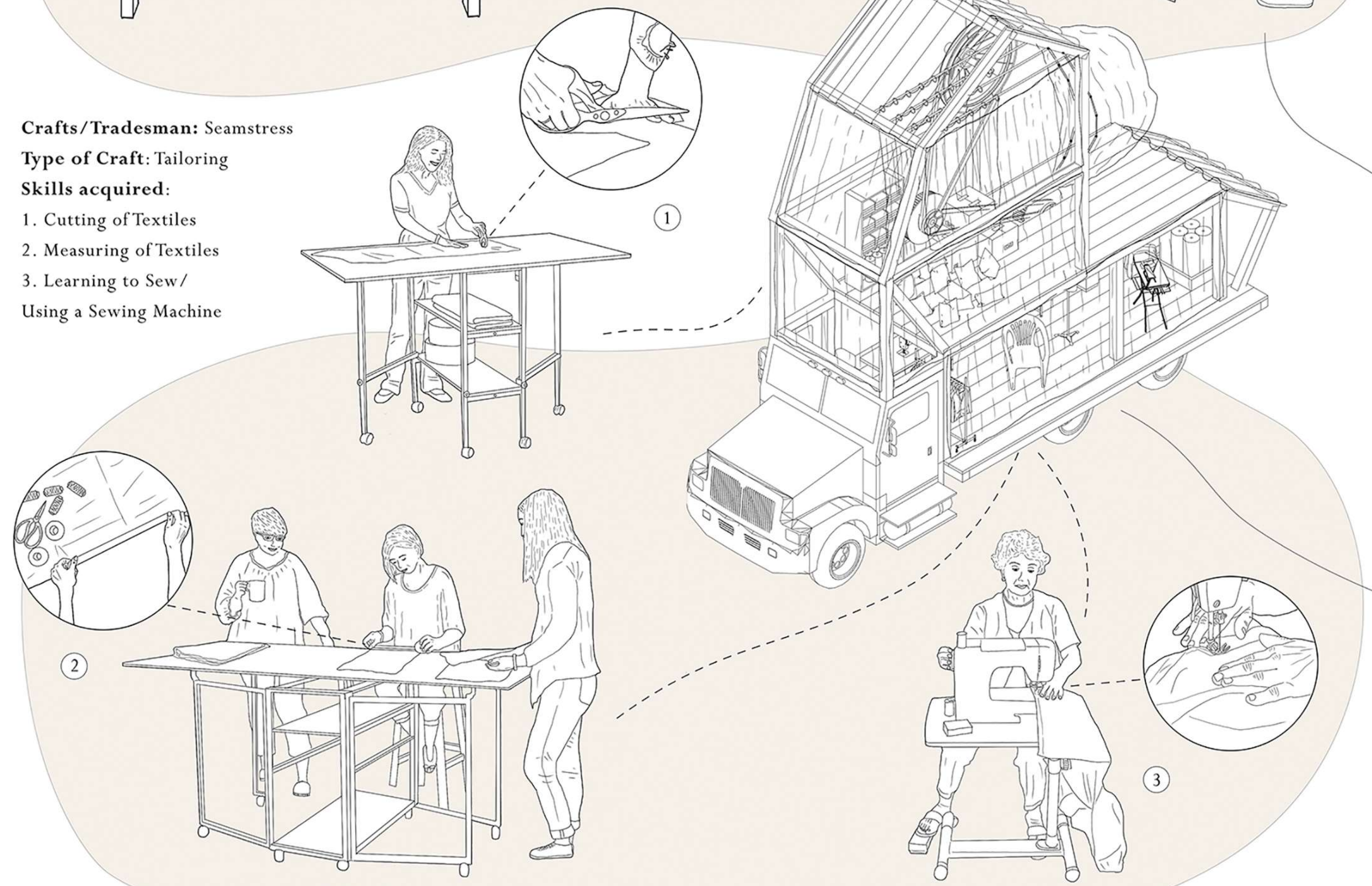


Crafts/Tradesman: Seamstress

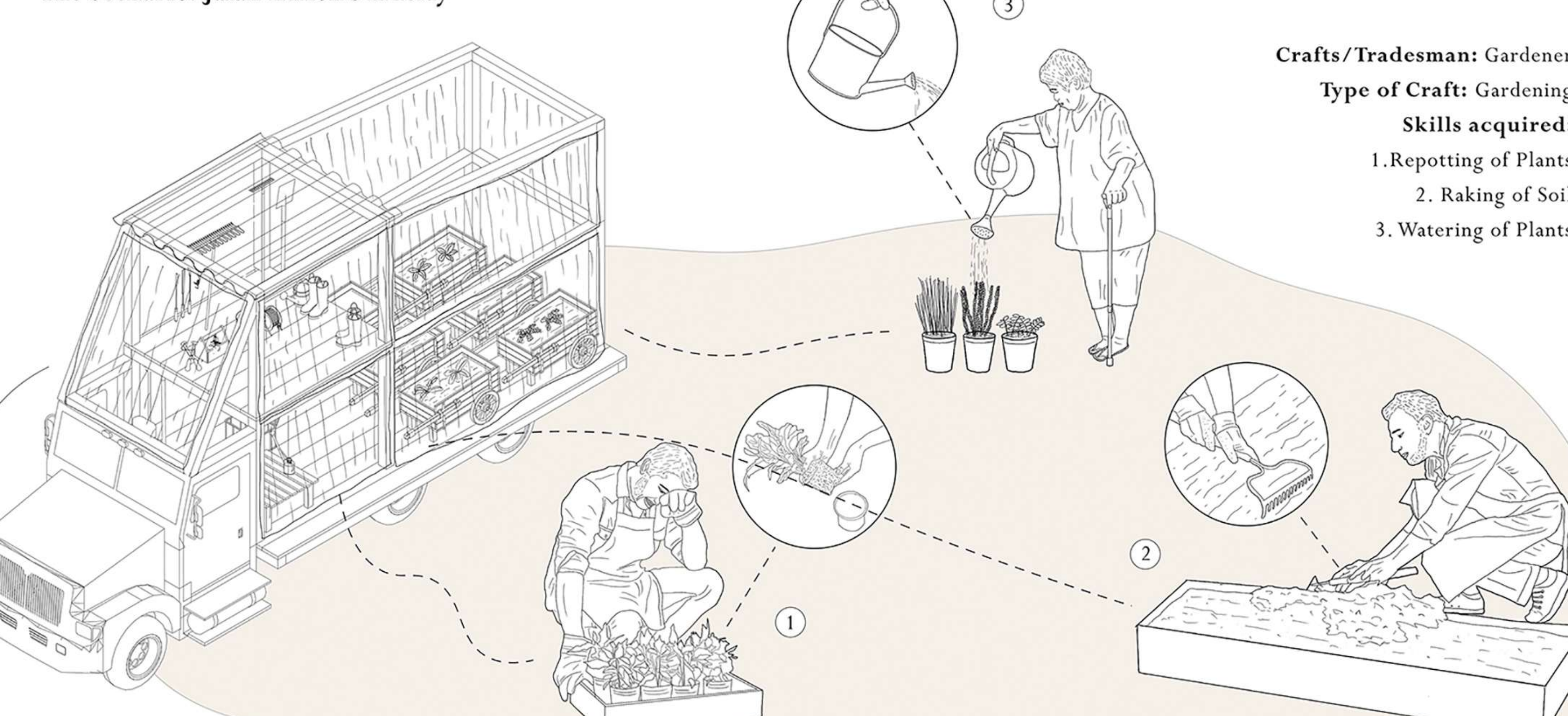
Type of Craft: Tailoring

Skills acquired:

1. Cutting of Textiles
2. Measuring of Textiles
3. Learning to Sew/ Using a Sewing Machine



The Scenario: Jalan Kukoh's Elderly



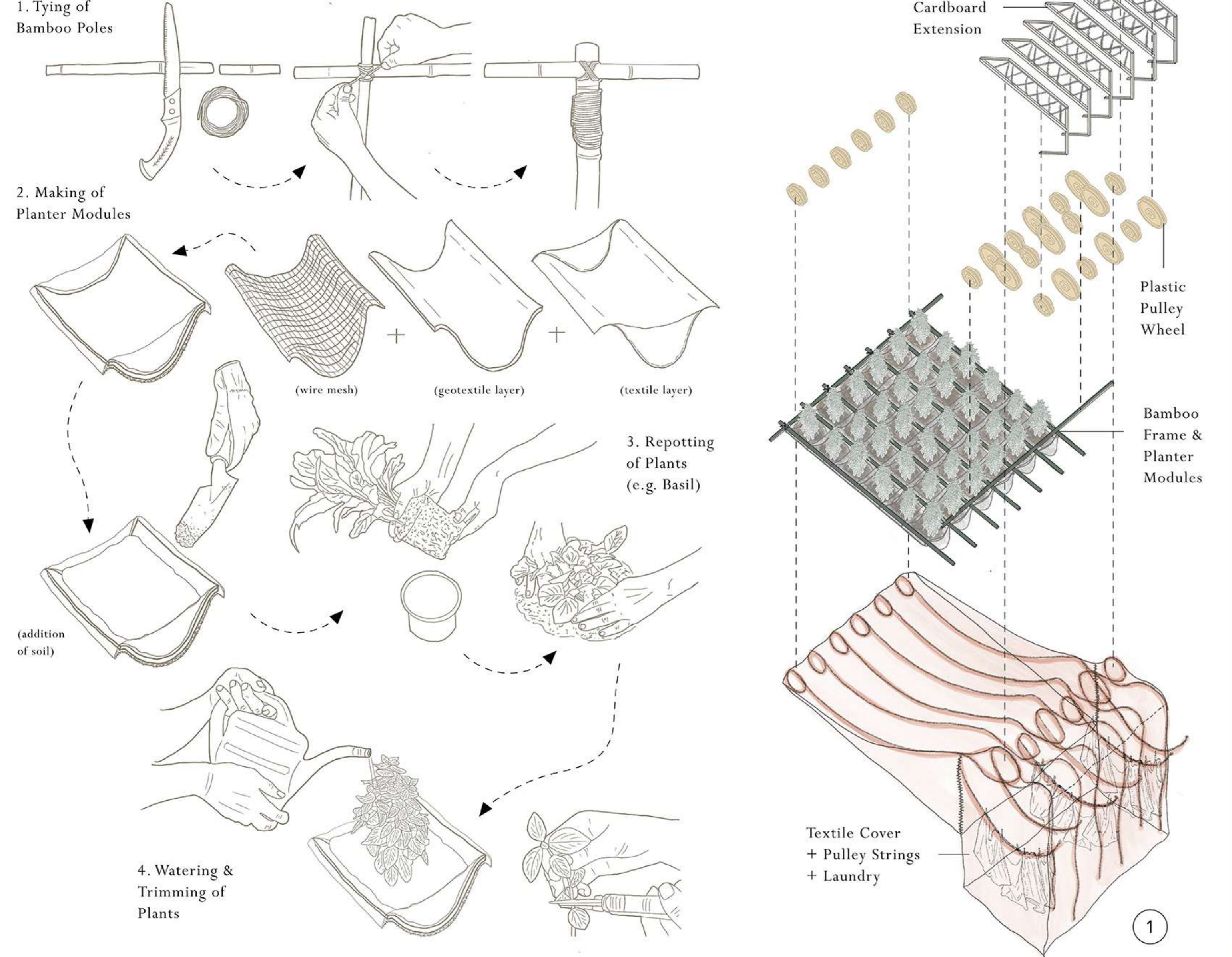
Crafts/Tradesman: Gardener

Type of Craft: Gardening

Skills acquired:

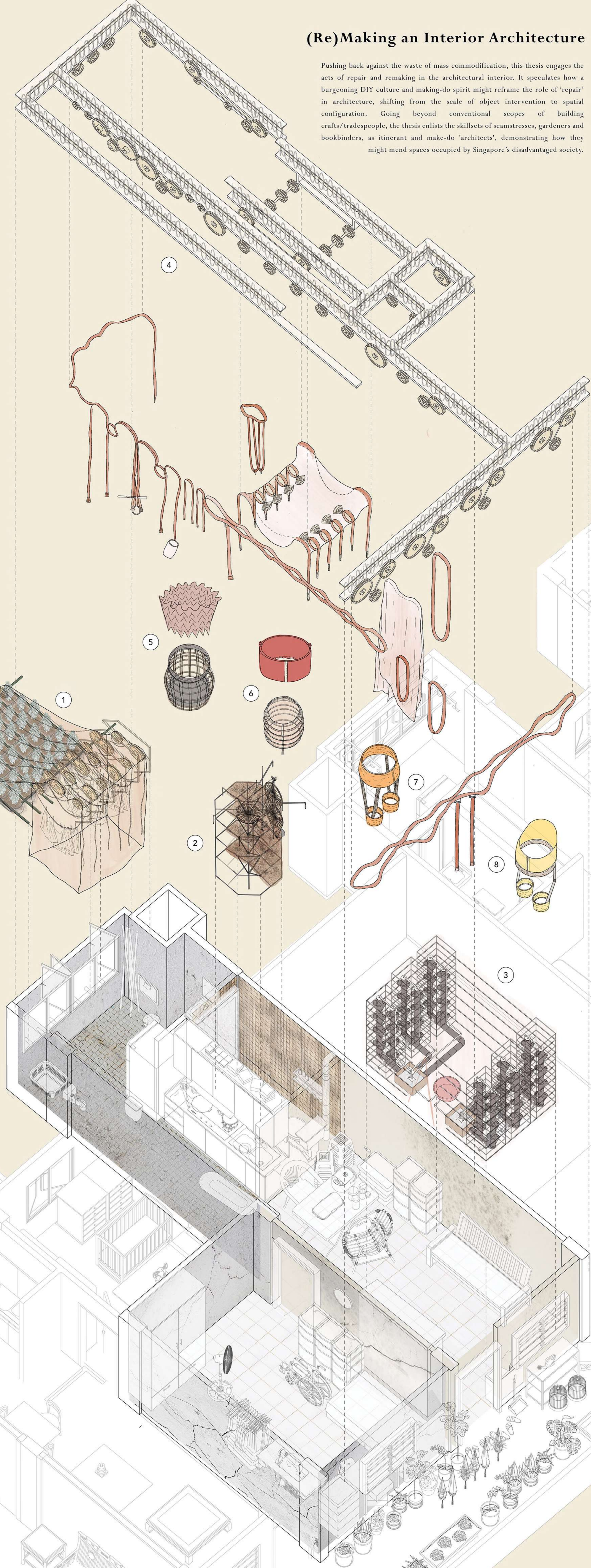
1. Repotting of Plants
2. Raking of Soil
3. Watering of Plants

Laundry-Planter System

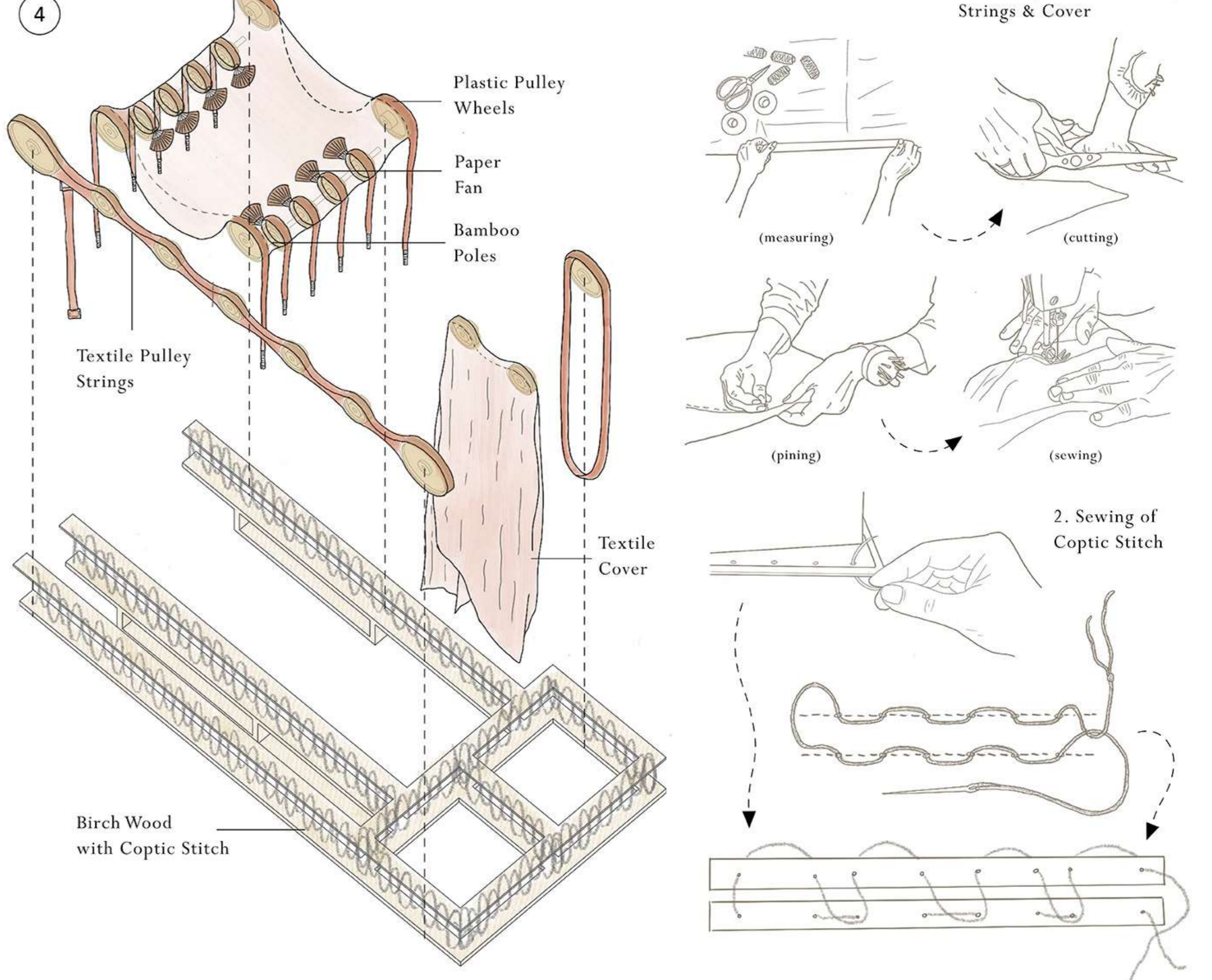


(Re)Making an Interior Architecture

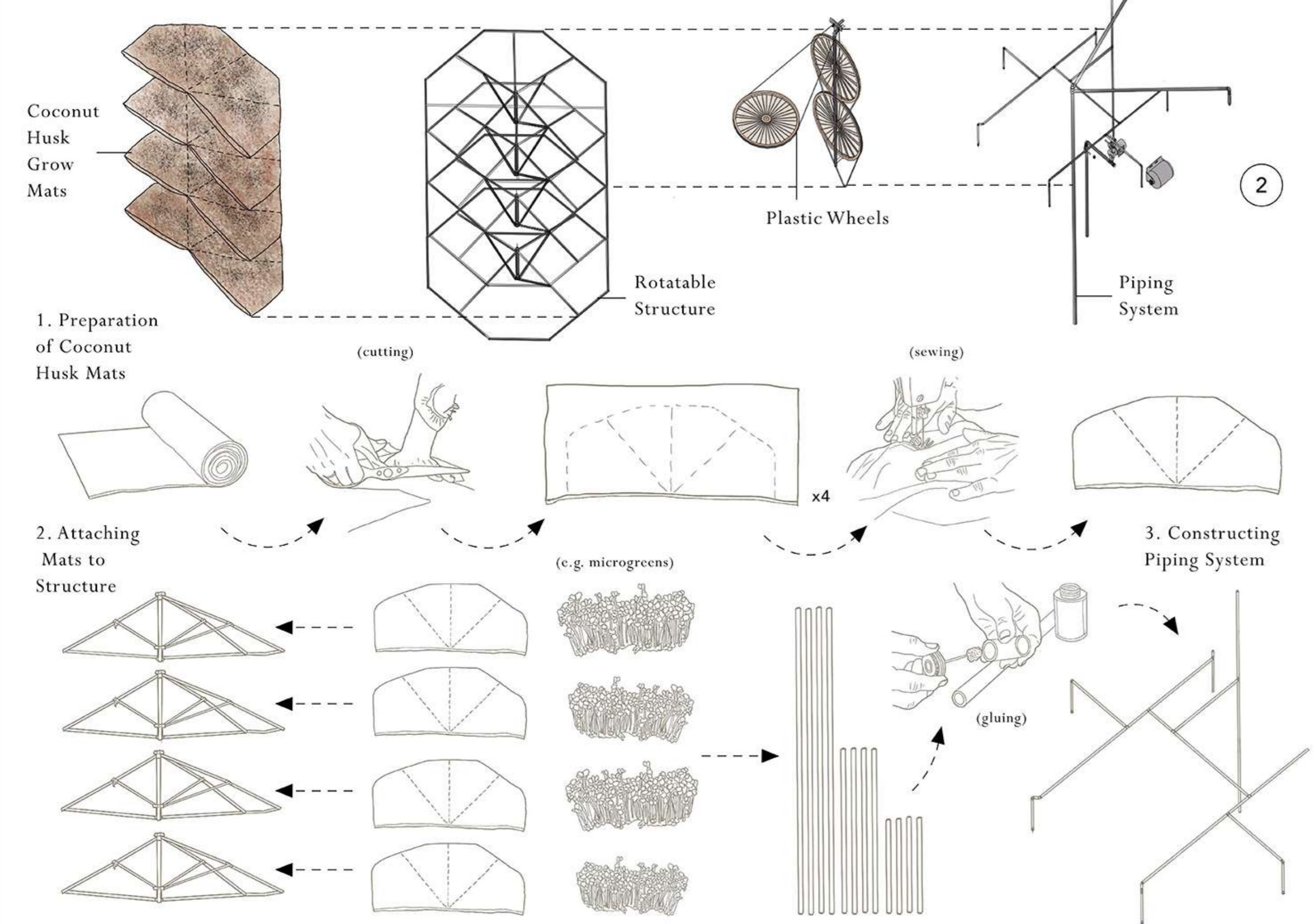
Pushing back against the waste of mass commodification, this thesis engages the acts of repair and remaking in the architectural interior. It speculates how a burgeoning DIY culture and making-do spirit might reframe the role of 'repair' in architecture, shifting from the scale of object intervention to spatial configuration. Going beyond conventional scopes of building crafts/tradespeople, the thesis enlists the skillsets of seamstresses, gardeners and bookbinders, as itinerant and make-do 'architects', demonstrating how they might mend spaces occupied by Singapore's disadvantaged society.



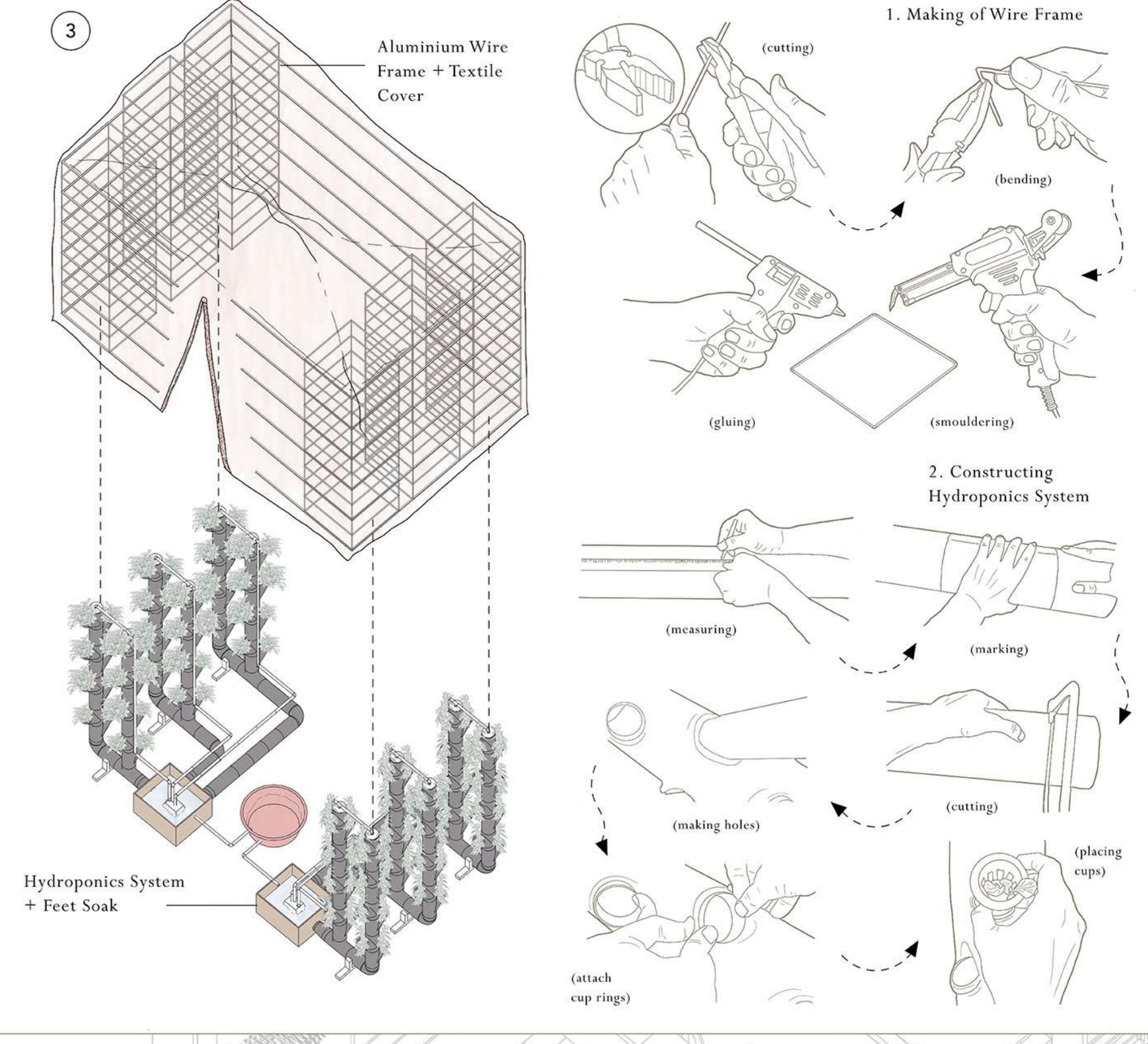
Textile Pulley-Conveyor System



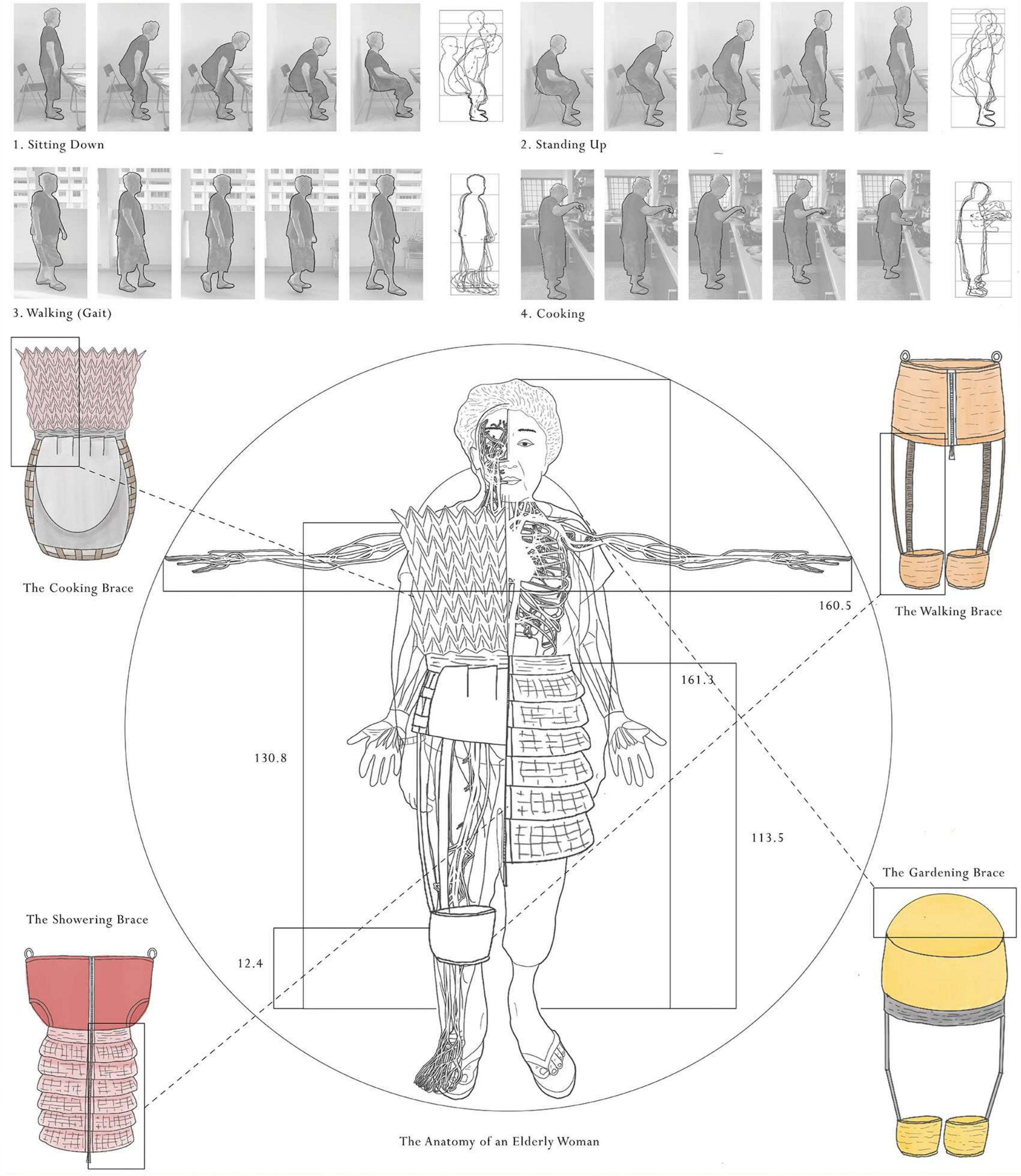
Deployable Shower System



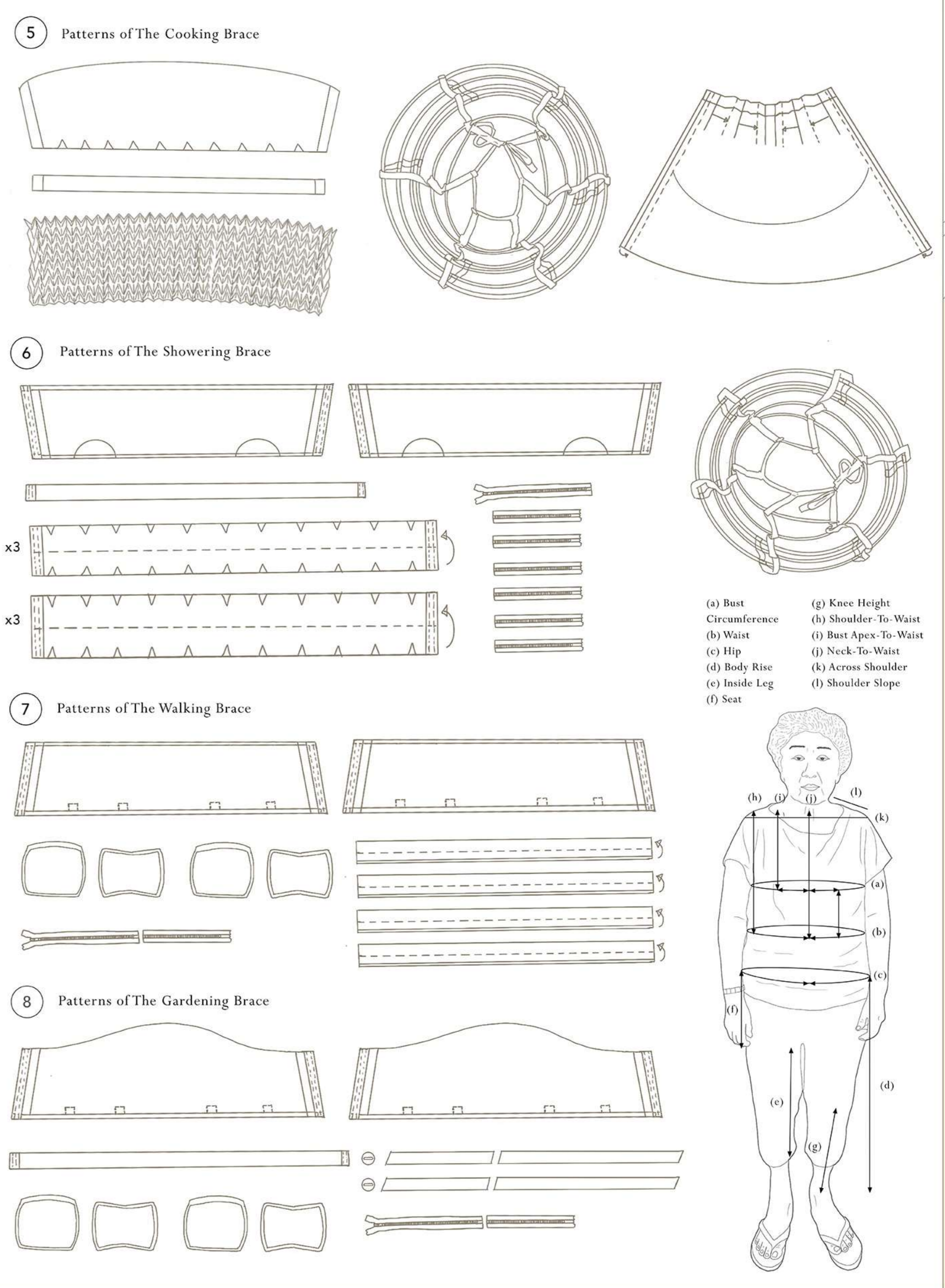
Herbal Hydroponics System



Anthropometric Studies



Body Braces





A large, dark grey display board is the central focus. It features several items pinned to it: two sets of brown paper garment patterns (one for a vest-like top and one for trousers), two white fabric prototypes of the same items, and a small white paper bag. To the right of the fabric items is a vertical strip of small, repeating images, possibly a sequence of a garment being assembled or a material being tested. The board is mounted on a metal frame.

A long, white table with black legs and casters is positioned in front of the display board. It holds several items: a colorful, dome-shaped object made of yellow, orange, and white paper or fabric; a small white box containing a model of a plant system; and a larger, more complex model of a plant system with orange and white elements. There are also some papers and a book on the table.

THE
DEPLOYABLE - PLANTER
SYSTEM

A model of a planter system is displayed in a clear plastic box. It features a horizontal structure with several circular elements, possibly representing plant pots or sensors, and a network of orange and white fibers or tubes. The model is supported by a wooden base.

THE
LAUNDRY - PLANTER
SYSTEM

THE
HERBAL
HYDROPONICS
SYSTEM

A person wearing a black jacket and a face mask is standing in the background on the right side of the image. They are looking towards the display area. The person is wearing black sneakers with white laces.

A large window is located on the right wall, providing a view of greenery outside. The window has a black frame and is partially open. The view shows lush green plants and trees.

DATA

ELECT

TEAD

3 Perspective C-C'

Crafts/Profession: Gardener
Type of Craft: Gardening
Skills acquired:
 1. Reparing of Plants
 2. Making of Soil
 3. Watering of Plants

Laundry-Planter System
 Handled Zone 1

1. Tying of Bamboo Pliers
2. Making of Planter Modules
3. Reparing of Plants (e.g. Basil)
4. Watering & Treasuring of Plants

Reinforced Cardboard Extension
 Plastic Pulley Wheel
 Bamboo Frame & Planter Module
 Traffic Cover
 Pulley Straps
 Laundry

Deployable Shower System
 Handled Zone 2

1. Preparation of Coconut Husk Mats
2. Attaching Mats to Structure
3. Constructing Piping System

Coconut Husk Mats
 Plastic Wheels
 Rotatable Structure
 Piping System

Anthropometric Studies

1. Sitting Down
2. Standing Up
3. Walking (Cart)
4. Cooking

The Cooking Brace
 The Walking Brace
 The Showering Brace
 The Carrying Brace

The Anatomy of an Elderly Woman

(Re)Making an Interior Architecture

Pushing back against the waste of mass commodification, this thesis explores the acts of repair and remodeling in the architectural interior. It reexamines how a burgeoning DIY culture and making its spirit might reform the role of repair in architecture, shifting from the scale of object intervention to spatial configurations. Going beyond conventional scopes of building craft/interiority, the thesis relates the abilities of communities, gardeners and handicrafters, as interior and maker-do, architects, demonstrating how they might re-occupy spaces occupied by Gropius's disintegrated society.

Textile Pulley-Conveyor System
 Mobility Support Structure

1. Making of Textile Pulley Straps & Clips
2. Sewing of Caprice Straps

Plastic Pulley
 Paper
 Bamboo Pliers
 Textile Pulley Straps
 Textile Cover
 Black Wood with Caprice Straps

Herbal Hydroponics System
 Handled Zone 3

1. Making of Wire Frame
2. Constructing Hydroponics System

Aluminum Wire Frame
 Truss Cover
 Hydroponics System
 Park Bench

Body Braces
 Caretakers for Movement & Balance

5. Patterns of the Cooking Brace
6. Patterns of the Showering Brace
7. Patterns of the Walking Brace

Physical prototypes of the assistive devices, including a colorful fabric bag, a white box, and a yellow metal frame.

A white garment, possibly a shirt or jacket, hanging on a rack.

